

**3 cup**

**Food Chopper**



**SYLVANIA**

# IMPORTANT SAFEGUARDS

## Definitions

*Whenever used, the following identify safety and property damage messages and designate a level of hazard seriousness.*



- This is the safety alert symbol. It alerts you to potential personal injury hazards. Obey all safety messages that follow this symbol to avoid possible injury or death.

**DANGER** – Indicates an imminently hazardous situation, which, if not avoided, will result in death or serious injury. Usage of this signal word is limited to the most extreme situations.

**WARNING** – Indicates a potentially hazardous situation, which, if not avoided, could result in death or serious injury.

**CAUTION** – Indicates a potentially hazardous situation, which, if not avoided, may result in minor/moderate injury.

**NOTICE** – Addresses practices not related to personal injury, such as product and/or property damage.

When using electrical appliances, always follow basic safety precautions, including the following:




## READ ALL INSTRUCTIONS BEFORE USE.



**WARNING--** To reduce the risk of fire, electric shock, or serious personal injury:

- Do not put the Base, Power Cord, or Plug of this product in water or other liquids.
- Keep the product out of the reach of children and pets. This product is not intended for use by children. Extra caution and close supervision are necessary when using this product near children.
- Unplug from the electrical outlet when not in use, before putting on or taking off parts, and before cleaning.

- Keep hands and utensils away from moving blades or discs while processing food. A scraper may be used but only when the food processor is not running.
- Blades are sharp; handle carefully. Always hold the blade assembly by the stem and away from the cutting edge, both when handling and cleaning.
- Never place cutting Blades on the Base without first putting the Bowl properly in place.
- Always remove the blade assembly before pouring contents from the bowl.
- Do not use attachments not recommended or sold by the product manufacturer.
- Keep the product away from heated surfaces, including stovetops.
- To disconnect from an electrical outlet, pull directly on the plug; do not pull on the Power Cord.
- Do not put any stress on the Power Cord where it connects to the product, as the Power Cord could fray and break.
- Do not leave the product unattended while it is in use.
- Do not plug or unplug the product into/from the electric outlet with a wet hand.
- Never locate the product where it may fall into a sink or other water/liquid filled container. If the product falls into water or other liquid, **do not touch or reach into the water/liquid**. Immediately unplug it from the electric outlet before attempting to retrieve it.
- Do not operate the product if it has a damaged or cut Power Cord or plug, if wires are exposed, if it malfunctions, if it is dropped or damaged, or if the Motor Housing is dropped in or exposed to water. This product has no user-serviceable parts; do not attempt to examine or repair this product yourself. Only qualified service personnel should perform any servicing; take the product to the appliance repair shop of your choice for inspection, repair, or electrical or mechanical adjustment.

** CAUTION-- To reduce the risk of personal injury or product/property damage:**

- This product is intended for indoor, non-commercial, non-industrial, household use in processing food items for human consumption. Do not use outdoors or for any other purpose.
- Do not allow the Power Cord to hang over the edge of a table or counter.
- Use the product only on a flat, level, stable surface.

- Do not store any materials (for example, paper, cardboard or plastic) in this product when not in use unless recommended by the manufacturer in these instructions.
- Ensure the Cover is securely locked into place before operating the product. Do not attempt to defeat the Cover interlock mechanism.

**WARNING:** This appliance has a polarized plug (one blade is wider than the other). To reduce the risk of electric shock, this plug is intended to fit into a polarized outlet only one way. If the plug does not fit fully into the outlet, reverse the plug. If it still does not fit, contact a qualified electrician. Do not attempt to modify the plug in any way.



## **SPECIAL INSTRUCTIONS:**

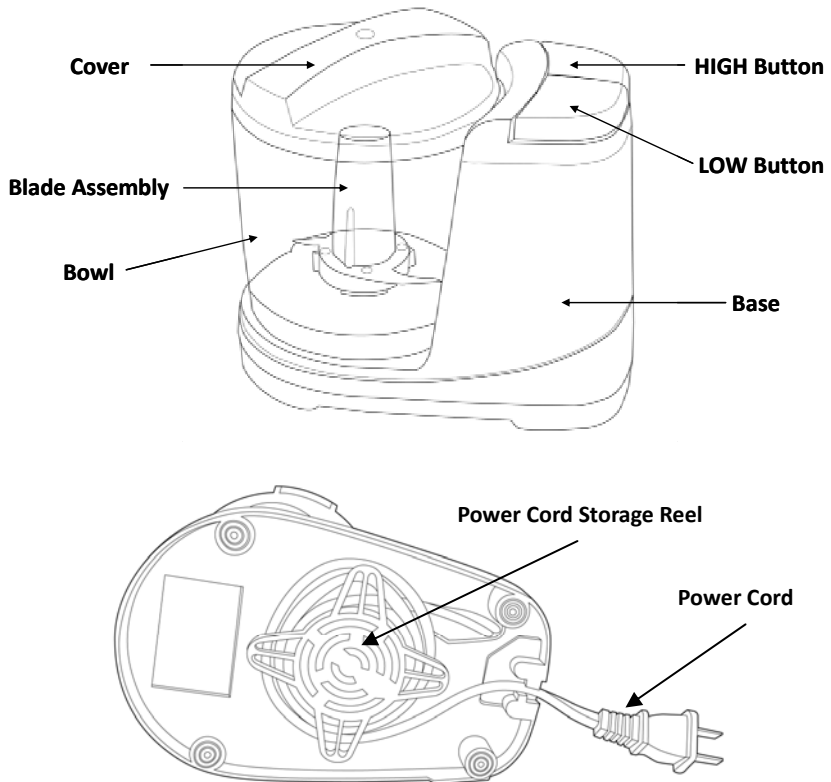
A short power supply cord is provided to reduce the risk of becoming entangled in or tripping over a longer cord. Extension cords are available and may be used if care is exercised in their use:

- The marked electrical rating must be at least as great as that of the product;
- If the product is of the grounding type, the extension cord must be a grounding-type 3-wire cord;
- Arrange the longer cord so that it will not drape over a countertop or tabletop, where it can be tripped over, snagged, or pulled on unintentionally (especially by children).

**SAVE THESE INSTRUCTIONS  
FOR FUTURE REFERENCE**

**- FOR HOUSEHOLD USE ONLY -**

## Parts



### ***Part Functions:***

- **Cover:** Must be properly locked onto the Bowl before operating the appliance.
- **Blade Assembly:** Used for mincing food (e.g., boneless meat, nuts, onions, garlic).
- **Bowl:** Holds the processed food.
- **LOW Button:** Chops at low speed while button is pressed.
- **HIGH Button:** Chops at high speed while button is pressed.
- **Base:** Houses the motor and holds Bowl in place.

## **Before First Use**

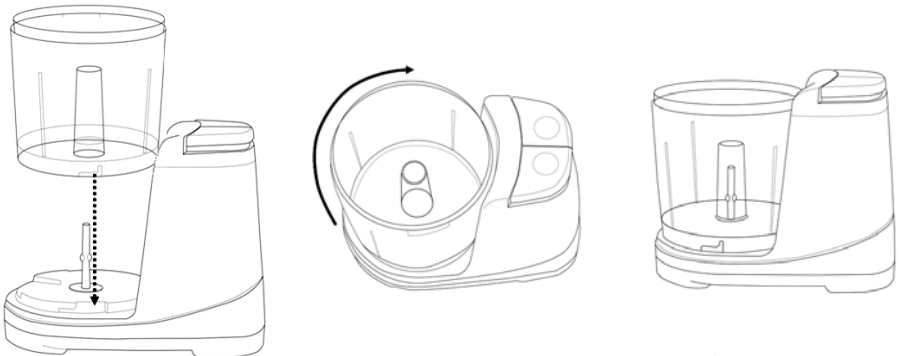
**CAUTION:** To avoid possible personal injury, use extreme care when handling the blades. Always hold the blade assembly by the finger grip or stem, away from the cutting edge, both when handling and cleaning.

1. Carefully unpack the product and remove any packing materials, labels, and stickers.
2. Clean all the parts, except the Base, following the instructions in the "Care and Maintenance" section.

## **To Use**

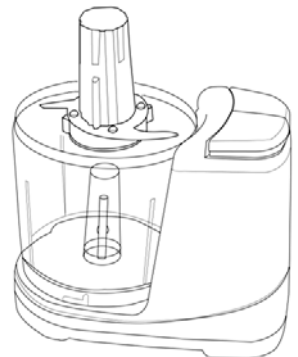
**NOTICE:** To avoid damage to the Blade Assembly, do not use the appliance for grinding hard substances such as coffee beans, raw meat, chocolate, or ice.

1. Position the Bowl onto the Base, aligning the tabs on the bottom of the Bowl with the slots in the Base. Turn the Bowl clockwise until it locks into place as shown.

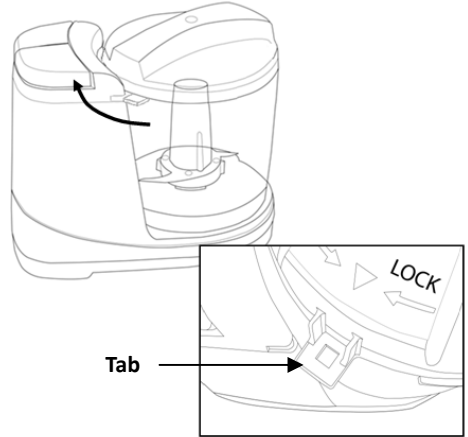


2. Place the Blade Assembly over the stem inside the Bowl.

**CAUTION:** To avoid a cutting hazard, always hold the Blades by the stem of the Blade Assembly as the Blades are sharp.



- Place contents to be chopped into the Bowl. Close the Cover by placing it on the Bowl, positioning the tab on the Cover to the left of the Base as shown. Turn the Cover clockwise until the tab slides into the groove in the base and locks into position.



**CAUTION:** The locking Cover is a safety feature that allows the product to operate only when the Cover is properly locked into place. Do not attempt to defeat the safety purpose of the locking Cover.

- Plug the power cord into a 120-volt AC electrical outlet.
- Press and hold the LOW or HIGH Button to begin. See the Processing Guide below for detailed instructions on chopping different kinds of foods. When the contents are at the desired consistency, release the Button, and then allow the Blades to stop completely.

INGREDIENT	PROCEDURE
Bread	Tear up to three bread slices and place into bowl. Pulse on LOW to make bread crumbs.
Parmesan Cheese	Cut in ½-inch cubes. Process ½ cup at a time. Pulse on HIGH.
Baking Chocolate	Cut in ½-inch cubes, up to 4 ounces at a time. Pulse on HIGH.
Cookies	Break into pieces, up to 2 cups at a time. Process on HIGH.
Fruit	Cut fruit into large chunks. Place up to 2 cups pieces into chopper. Pulse on HIGH.
Garlic	Peel cloves before placing into bowl. Pulse on HIGH.
Graham Crackers	Break into 4 pieces. Place up to 6 crackers into bowl at a time. Pulse on HIGH.

Herbs (basil, sage, etc.)	Place up to 1 cup into bowl. Pulse on HIGH.
Nuts	Place up to 1 cup into bowl. Pulse on HIGH.
Parsley	Remove sprigs from bunch. Pulse on LOW until desired consistency.
Vegetables	Cut into 1-inch chunks. Place up to 2 cups into bowl at a time. Pulse on HIGH.

6. Unplug the product from the electrical outlet and then remove the Cover.
7. Turn the Bowl counterclockwise to release the tabs on the edges of the Bowl from the slots on the Base.  
**WARNING:** Always unplug the product when it is not in use or when it will be left unattended.
8. Remove the Blade Assembly before pouring contents from the Bowl.
9. See the "Care and Maintenance" section for cleanup procedures.

**NOTICE:** To avoid product damage, never exceed 30 seconds when chopping. After chopping for 30 seconds, allow the product to rest for one minute before resuming.

## **Care and Maintenance**

### **WARNING:**

- Always disconnect the power cord from the electric outlet before cleaning the product or putting on or taking off parts.
- Handle Blades carefully as they are sharp.
- Never submerge the Base in water or put it in the dishwasher; wipe the outside surfaces of the Base with a soft, damp cloth.

**NOTE:** *Some foods may discolor the plastic bowl. This is normal and will not harm the plastic or affect the flavor of the food being processed. Rub the discoloration with a cloth dipped in vegetable oil to remove the discoloration.*

1. Unplug the Power Cord from the electrical outlet.
2. Carefully remove the Blade Assembly from the product.



3. Remove the Bowl and empty any contents.
4. Wash the Blades, Cover, and Bowl in warm, soapy water or in the top rack of an automatic dishwasher; rinse and dry thoroughly.
5. Ensure the locking mechanisms on the Cover and the Base are free of food particles.
6. Wipe the Base with a soft, damp cloth. Dry thoroughly before storing or reusing.
7. Store the product in a clean, dry location.

### **Electrical Specifications**

<b>Voltage</b>	<b>Frequency</b>	<b>Wattage</b>
120VAC	60 Hz	135W

## LIMITED WARRANTY

This item is warranted to be free from defects in materials or workmanship for a period of two years from the original date of purchase under normal conditions of intended use. If this product is defective, Warrantor will, within the warranty period, replace the product or refund the purchase price of the product, at Warrantor's option, at the place of purchase upon presentation of sales receipt or other proof of purchase. This warranty extends only to the original retail purchaser and excludes any damage to the product resulting from accident, misuse, abuse, damage caused by electrical power surge, or operation not recommended or authorized by these operating and safety instructions. This warranty is voided if the product is ever used in a commercial or business environment.

There are no warranties beyond this limited warranty. This limited warranty is your complete and exclusive remedy. Warrantor makes no other warranties, express or implied, including but not limited to any implied warranty of merchantability or of fitness for a particular purpose. Warrantor undertakes no responsibility for the quality of the product except as otherwise provided herein. Warrantor assumes no responsibility that the product will be fit for any particular purpose for which you may be buying this product. Warrantor expressly disclaims liability for any special, incidental, indirect, or consequential damages arising from the purchase or use of this product.

The amount of Warrantor's liability under this warranty is limited to the amount of the original purchase price paid for the product by the original retail purchaser. If Warrantor cannot lawfully disclaim statutory or implied warranties, then all such warranties shall be limited to the duration of this warranty and to the amount of the original purchase price paid for the product by the original retail purchaser.

This warranty gives you specific legal rights; you may also have other rights that vary by jurisdiction. This warranty is valid only within the United States of America (USA).

**MFG/Item #A14A2799  
Model #HL-2129-1  
Version #1104**

**RC: WIC467705  
SVC Code: 3432**

**©2010-2011 All Rights Reserved**

**UL is a registered trademark of Underwriters Laboratories Inc. and is used under license.**

**SYLVANIA is a registered trademark of OSRAM SYLVANIA Inc. used under license.**

**Distributed By:  
Atico International USA, Inc.  
Ft. Lauderdale, FL 33301**

**For product information, questions, or customer service,  
e-mail [sylvaniaproducts@product-info.us](mailto:sylvaniaproducts@product-info.us) or call toll free 1-866-492-8133.**

**[www.sylvaniaproducts.com](http://www.sylvaniaproducts.com)**



“Enjoy wholesome home-cooked meals with SYLVANIA kitchen appliances. From meal prep to cleanup, the superior quality and performance of SYLVANIA kitchen and household appliances make cooking at home a joy.”

Look for these other SYLVANIA appliances:



Coffeemaker



Blender



Toaster

# SYLVANIA

For product information, questions, or customer service,  
e-mail [sylvaniaproducts@product-info.us](mailto:sylvaniaproducts@product-info.us) or call toll free 1-866-492-8133.  
[www.sylvaniaproducts.com](http://www.sylvaniaproducts.com)